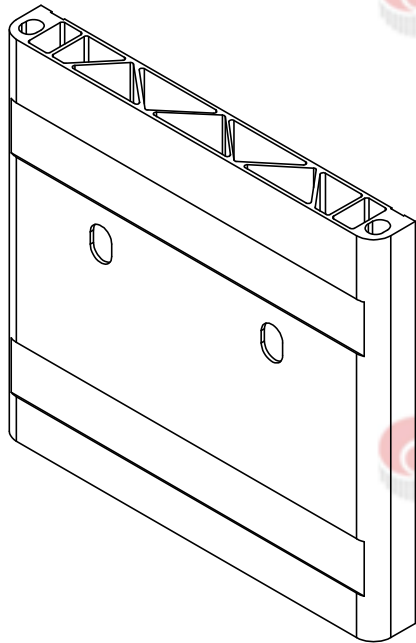
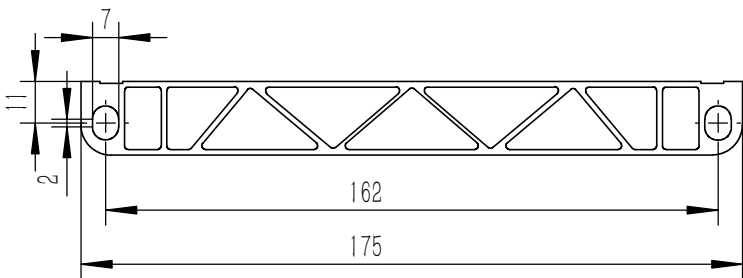
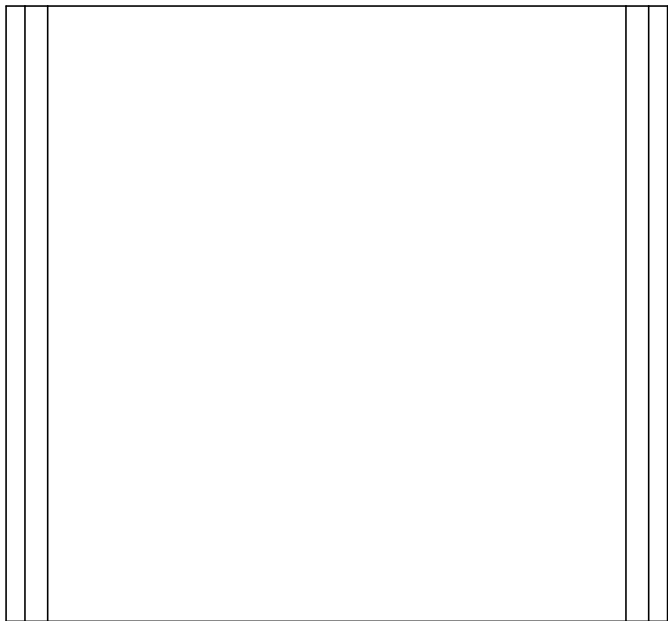
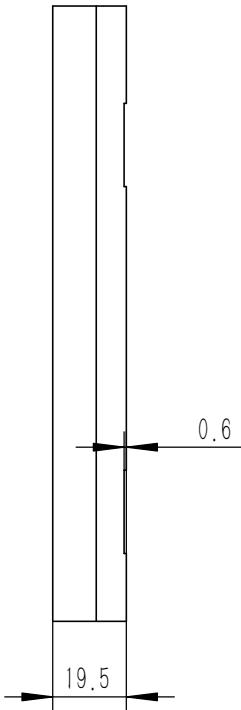
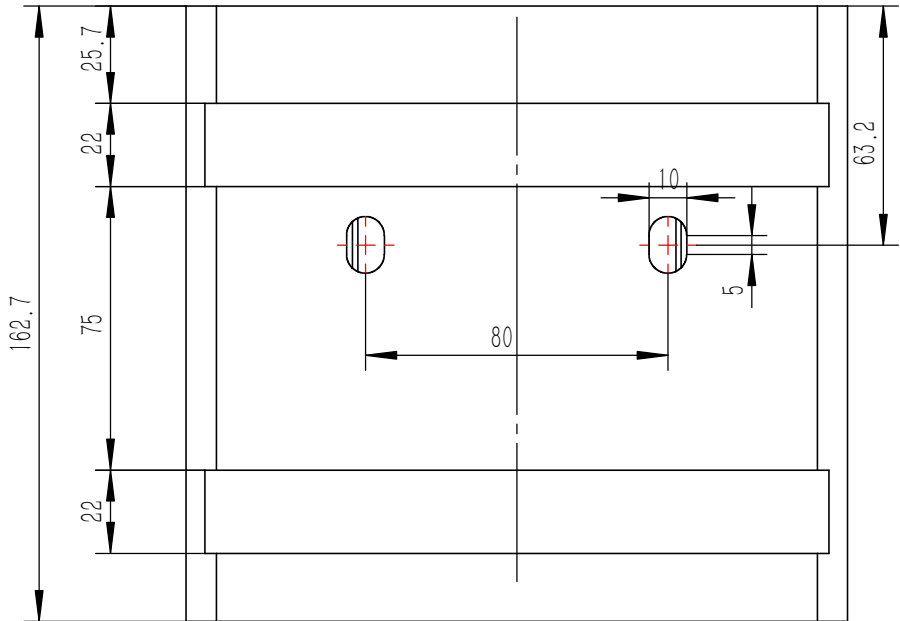


0100075832

受控



技术要求:
Technical requirements:
1.成型工整;
Forming neatly;
2.零件加工表面不应有划痕、擦伤等损伤零部件表面的缺陷;
The machined surface of the parts should not have scratches, scratches and other defects that damage the surface of the parts;
3.去除毛刺飞边;
Remove burrs and flash;
4.表面做拉丝处理;
The surface is brushed;
5.成型工整,符合图示标注公差;
The molding is neat and conforms to the tolerance shown in the figure;
6.未注公差执行GB/T 1804-m。
GB/T 1804-m shall be implemented for unannotated tolerances.



旧底图总号

底图总号

日期 签字

					48V100Ah-5U 铝端板 Aluminum end plate	0100075832			
标记	处数	更改文件号	签名	日期		阶段标记		重量	比例
Sign	Qty	File Number	Signature	Date		MPS		Weight	Scale
设计		20220722	韦艳娟	20220725		S	A		1:2
校对		20220722	李坤	20220725	铝合金 型材	页码	1	总页数	1
Collated		20220722	李坤	20220725		Page		Total	
工艺		20220722	赵殿云	20220725	山东圣阳电源股份有限公司 SHANDONG SACRED SUN POWER SOURCES CO.,LTD				
Technic		20220722	赵殿云	20220725					